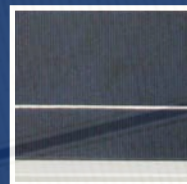
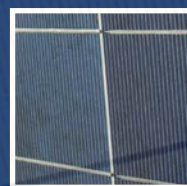


US 260P/265P/270P-20

Polycrystalline PV Module



US 260P/265P/270P-20

STC*

| Type | US260P-20 | US265P-20 | US270P-20 |
|-----------------------|-----------|-----------|-----------|
| P _{max} [W] | 260 | 265 | 270 |
| V _{mpp} [V] | 30.63 | 30.96 | 31.22 |
| I _{mpp} [A] | 8.49 | 8.56 | 8.65 |
| V _{oc} [V] | 37.97 | 38.13 | 38.23 |
| I _{sc} [A] | 9.05 | 9.10 | 9.13 |
| Module efficiency [%] | 15.98 | 16.29 | 16.60 |
| Cells efficiency [%] | 17.99 | 18.33 | 18.68 |
| Max. System Voltage | 1000V DC | 1000V DC | 1000V DC |

* STC – Standard Test Conditions, measurement conditions: intensity irradiation 1000 W/m², spectral distribution AM 1.5, temperature 25 ± 2°C, according to standard EN 60904-3

** Power Measuring tolerances ± 3%

Mechanical characteristics

| | |
|----------------------|---|
| Solar Cells | 60 crystalline solar cells, 156 x 156 mm |
| Glass | Solar glass with anti-reflection surface treatment, 3.2 mm |
| IP protection level | IP65/IP67 |
| Bypass-Diodes | 3 pcs. |
| Cables and connector | Junction box with MC4 (pluggable) connectors, cable: 2 x 900 mm / 4 mm ² |
| Dimensions (LxWxH) | 1640 x 992 x 40 mm |
| Weight | 19.0 kg |
| Mechanical ratings | Suction pressure of 2400 Pa approved (Wind speed 130 km/h with safety factor 3), load of 5400 Pa approved |

Temperature Coefficients

| | |
|-----------------------------|---------------------|
| Type | US270P-20 Poly |
| NOCT | 47 ± 2 °C |
| P _{max} | - 0.43%/K |
| V _{oc} | - 0.41%/K |
| I _{sc} | 0.08%/K |
| Operating Temperature Range | - 40 °C bis + 85 °C |

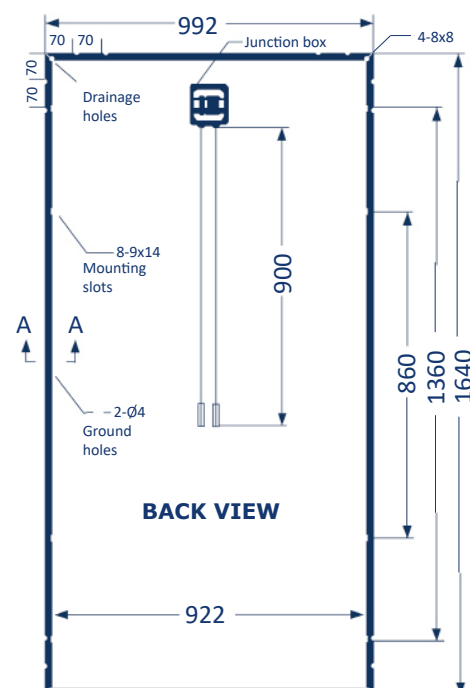
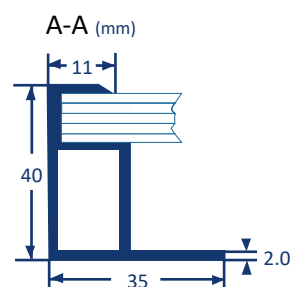
Unimen Solar reserves the right to change specifications without notice.



Revision 02-2016

Unimen Solar Co., Ltd
Mergenthalerallee 79-81
65760 Eschborn
Germany

Tel.: +49(0)6196 769 1872
Fax: +49(0)6196 777 3897
info@unimen-solar.de
www.unimen-solar.de



Packaging

| | | |
|-------------------|--------|--------|
| Container | 20" GP | 40" HC |
| Pallets | 14 | 14 |
| Number per pallet | 26 | 60 |
| Amount | 364 | 840 |

